



communications
Aviation Recorders

READ OUT SUPPORT EQUIPMENT (ROSE) RECORDER INTERFACE SOFTWARE

P/N 17TES0321

ROSE Software is Used for FDR Flight Data Extraction, Data Analysis, and Return to Service Testing.



- Data Decompression
- Flight Data Collection
- Recorder Status Query
- Database Control
- Customer Configured Data Report Display
- Tabular/Raw Data/Graphic Display of Flight Data
- Data Archive and Export
- Database Import/Export
- Recorder Testing

Aviation Recorders
P.O. Box 3041
Sarasota, FL 34230
Tel: (941) 371-0811
Fax: (941) 377-5591
www.L-3com.com

SPECIFICATIONS

READ OUT SUPPORT EQUIPMENT (ROSE) RECORDER INTERFACE (RI) SOFTWARE

ROSE software and ROC/5 Configuration provide operators with dual functionality by simulating input signals to the recorder, controlling the recorder for Return-to-Service testing, and providing access to the flight data for report and analysis. Applicable to ARINC 573/717/747 FDR systems only, ARINC 542A RTS not applicable.

- ROSE provides a Windows based user interface for access and control of recorder flight data.
- Flight data may be retrieved directly from the recorder, from a memory card or disk data file. All types of FA2100 and F1000 data may be accessed which include: ARINC 542, 573, and 717.
- A recorder automatic test function provides pass or fail recorder test results and displays current recorder status. In addition, simulated data patterns may be output as test data to be monitored and recorded on the flight recorder.

Report Analysis

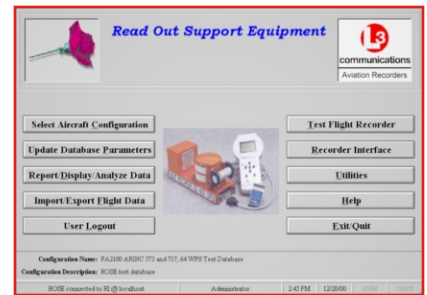
- Recorder data analysis and display allows either alphanumeric, graphical or combined display of parameter data.
- Eight different plot styles are available for selection and display of recorder flight data.
- Parameter display groups may be created and used for quick report creation.
- Data may be filtered or processed prior to display, and up to six parameters and conditions may be defined as search criteria to locate specific events within the flight data.
- Processed data values may be saved to a file and printed or exported in text (with comma delimiters) or graphical bitmap or metafile formats.

Aircraft Configuration Database Development

- Aircraft configurations for each aircraft are stored in a ROSE database and made available for import or export to and from other ground support systems.
- Automatic import conversion is performed when transferring from existing GS/2 and Excel configuration files.
- Aircraft configuration information is protected with advanced user login restriction levels for customized security modes.

The technical information contained in the marketing brochure(s) does not contain "technology" as defined by the General Technology Note in Export Administration Regulations (EAR) Supplement number 2 to Part 744 and is, therefore, considered as publicly released as defined in Part 734.7(4).

Specifications subject to change without notice. For up to date information go to www.L-3ar.com/Products MKT017Rev. D



Read Out Support Equipment (ROSE)



Read Out Center/5 (ROC5)
P/N 17TES0300 provides testing for all
ARINC 573/717/747 type recorders



ROSE Analysis Unit (RAU)
P/N 17TES0055 Standard
P/N 17TES0060 Rugged is used for on-
aircraft data analysis and downloading
on FA2100 FDR and F1000 SSFDR.



L-3 Aviation Recorders Quality Management System is ISO 9001:2000 and AS9100:2004 Rev. B Certified

For additional information contact:



communications
Aviation Recorders

P.O. Box 3041
Sarasota, FL 34230
(941) 371-0811 Fax: (941) 377-5591
www.L-3com.com